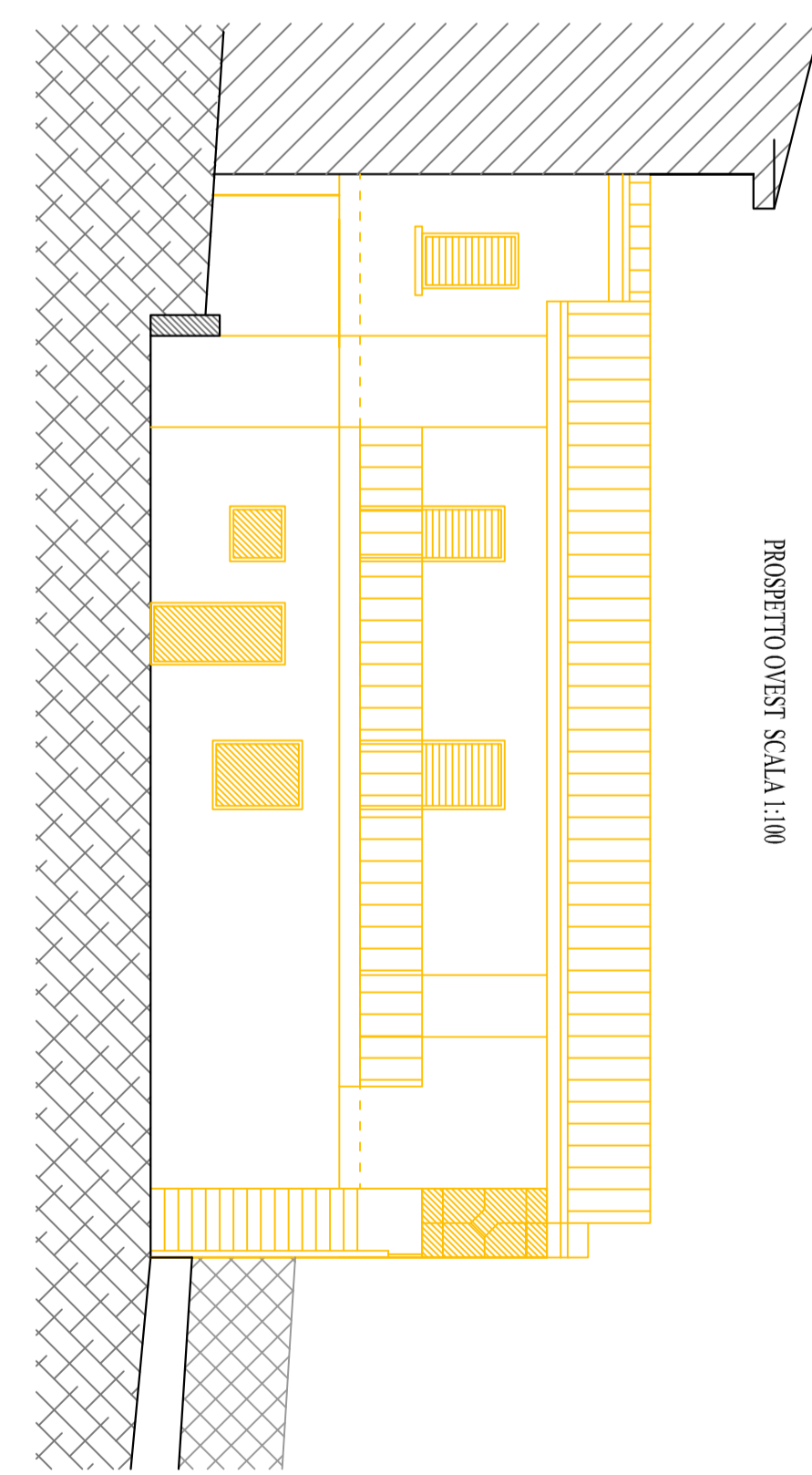
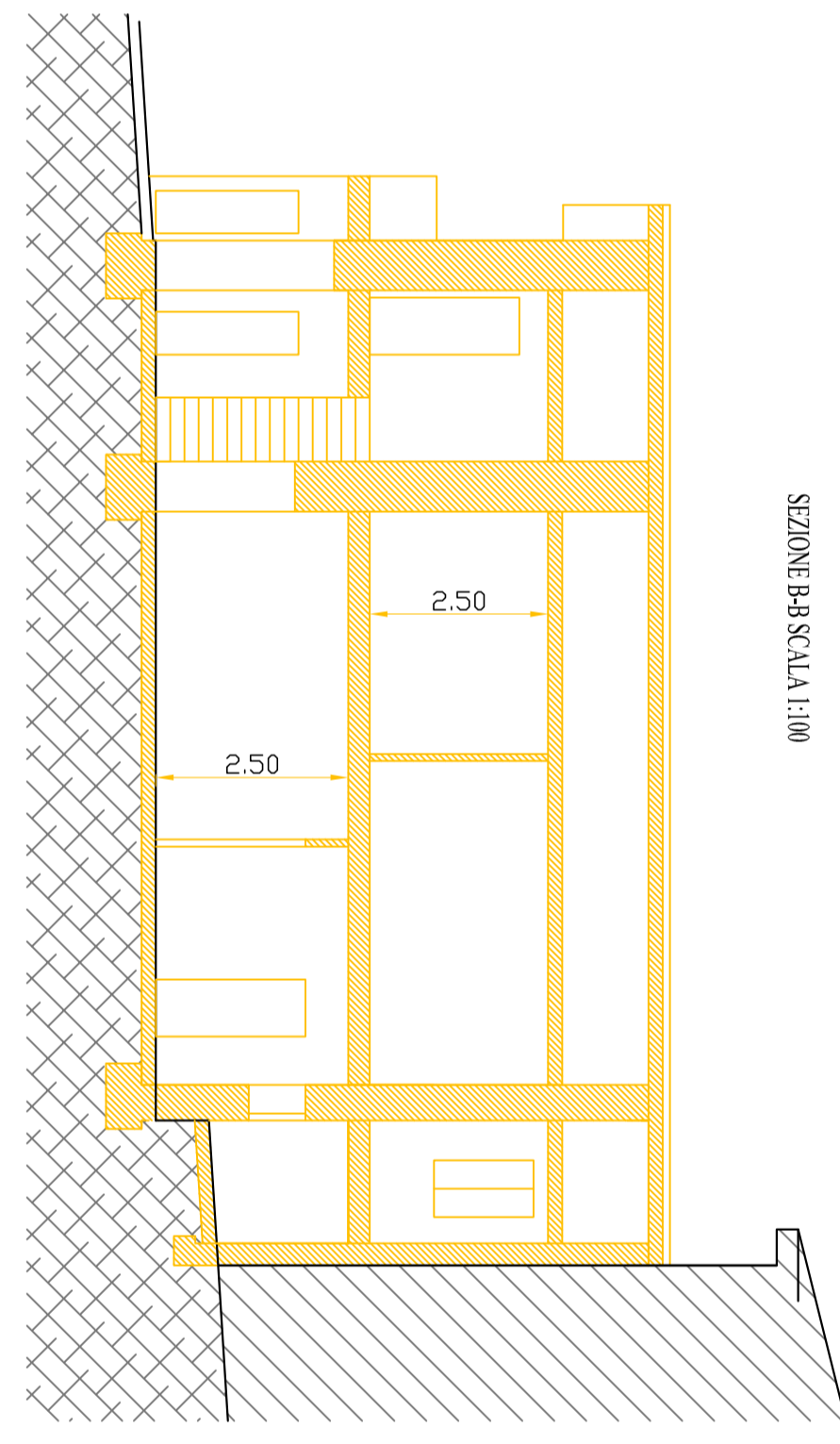
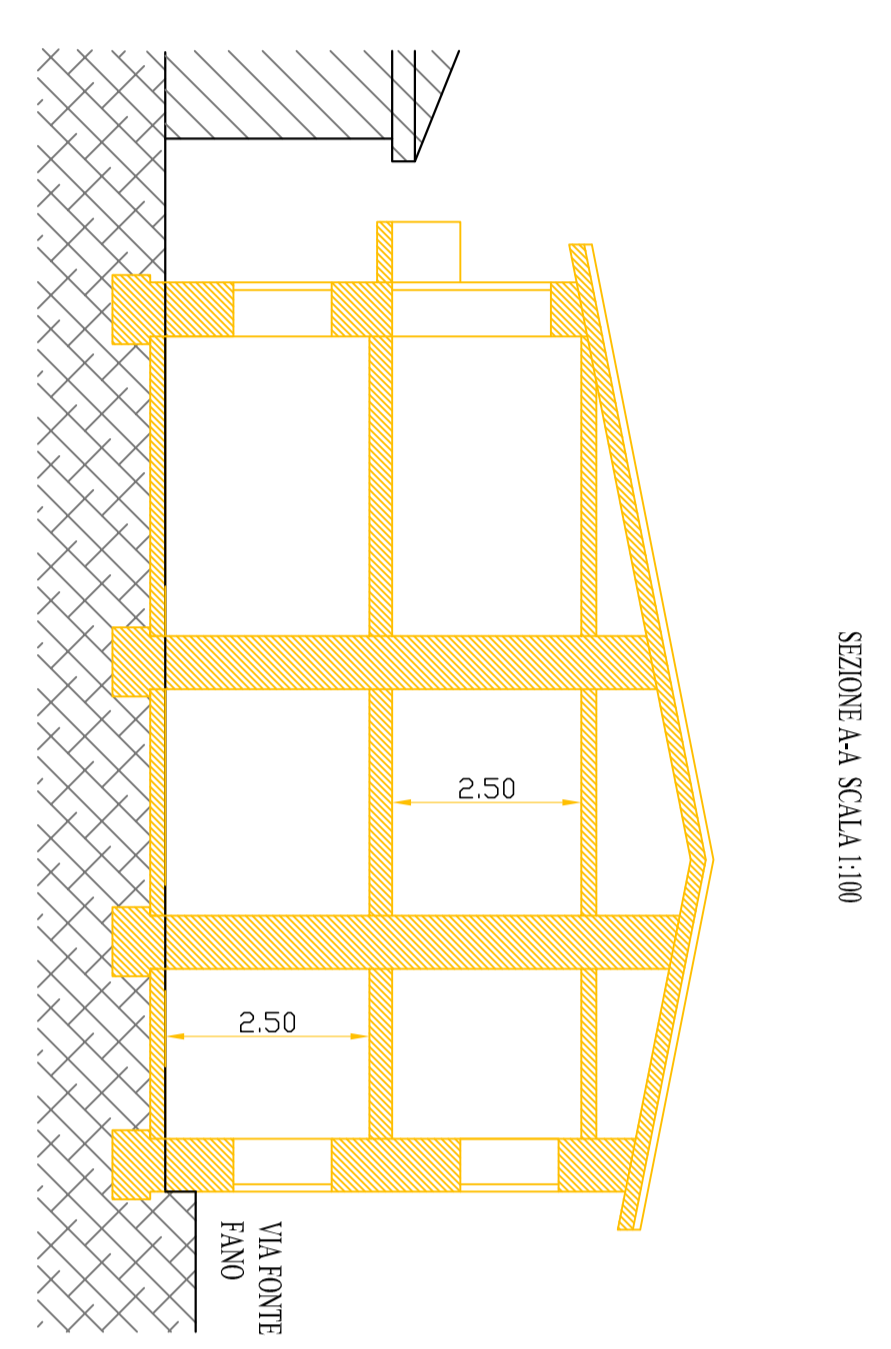
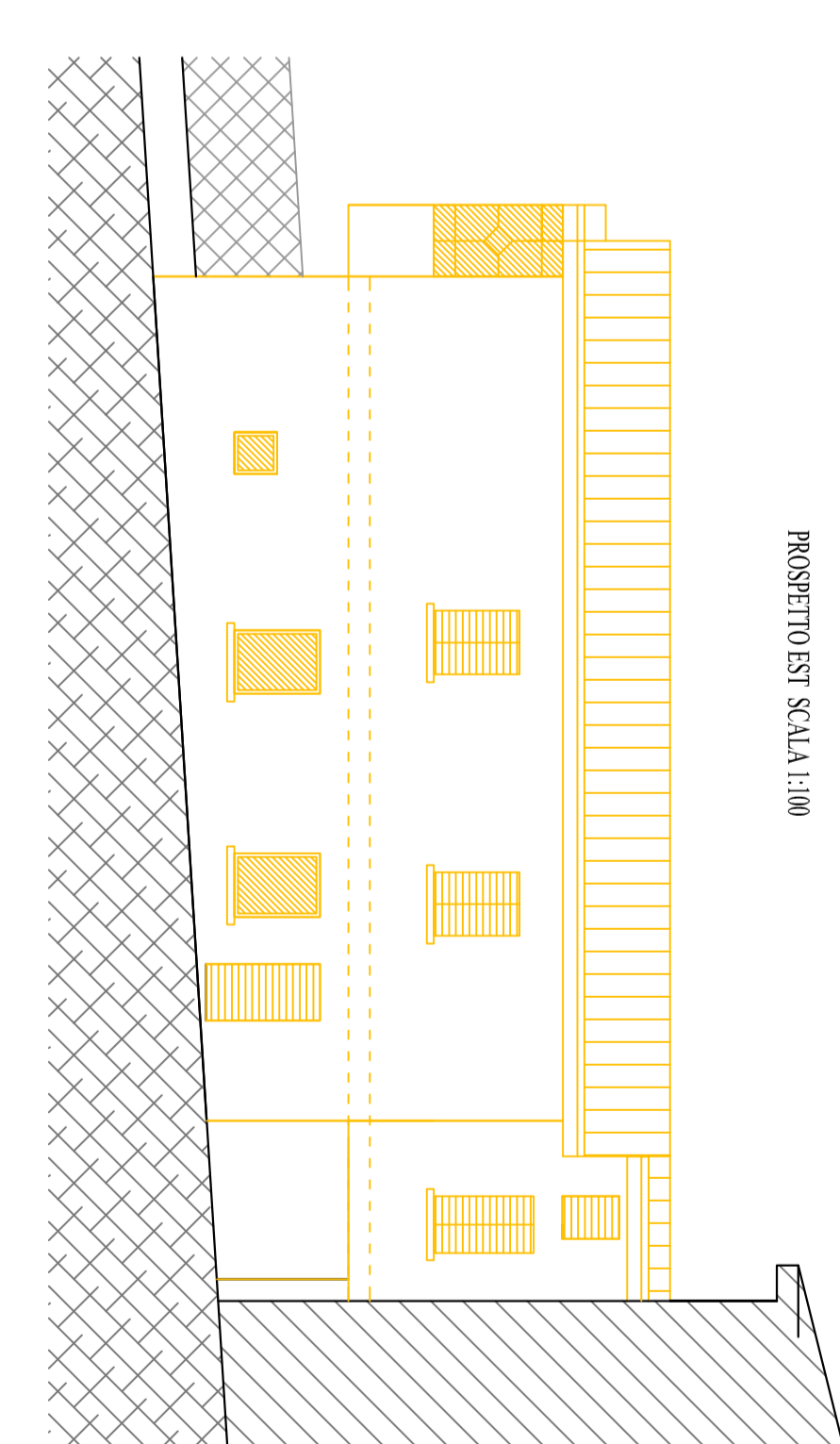
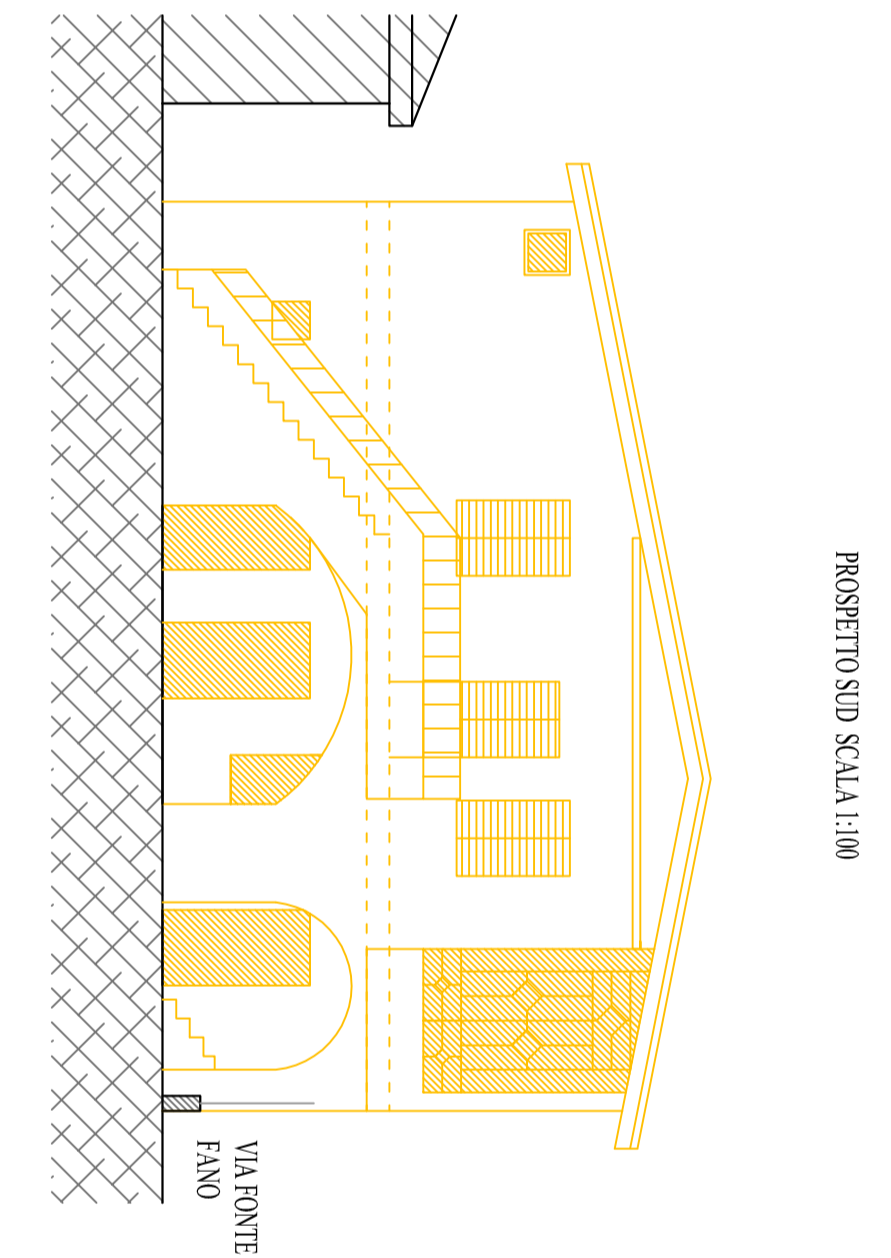
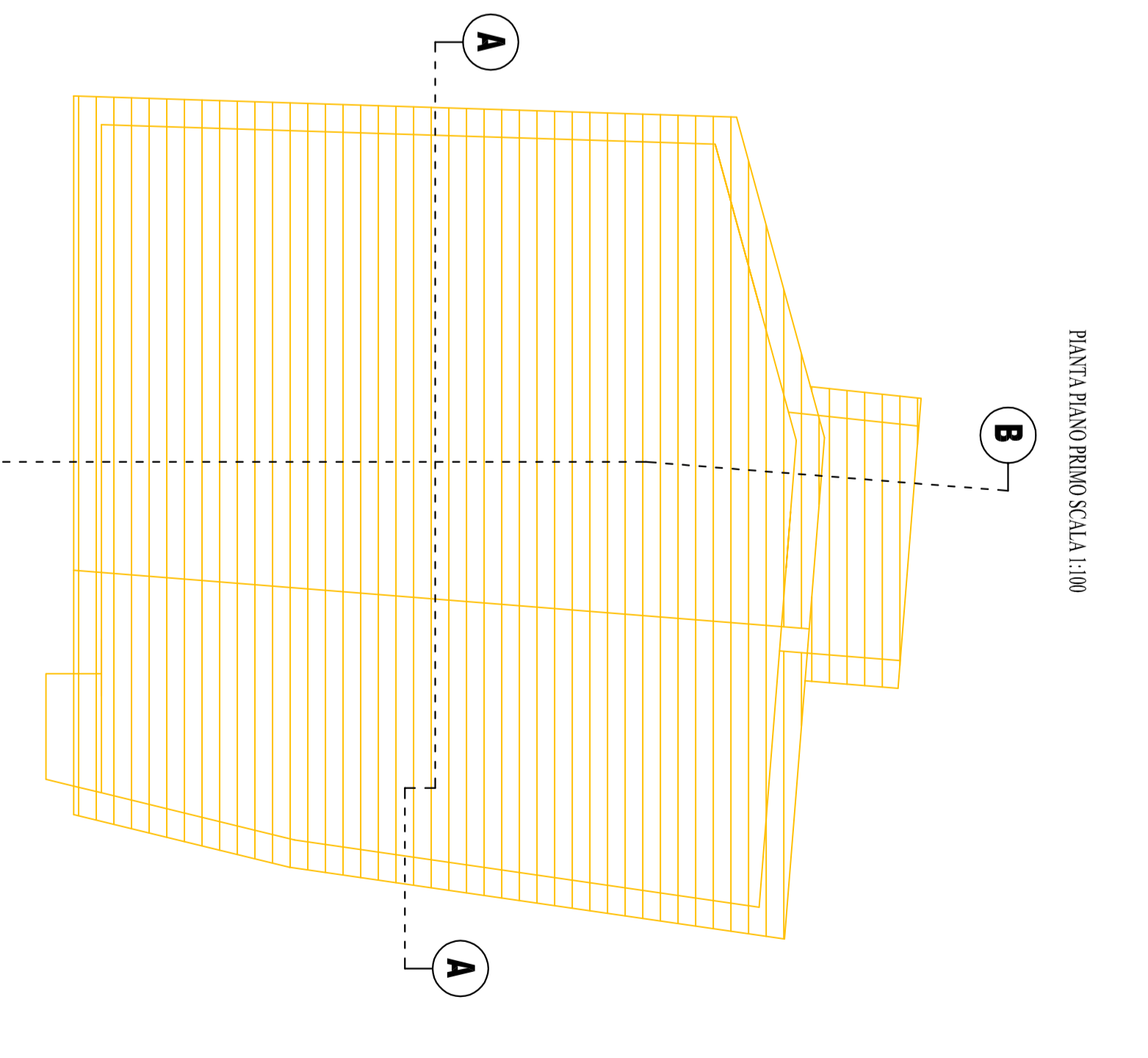
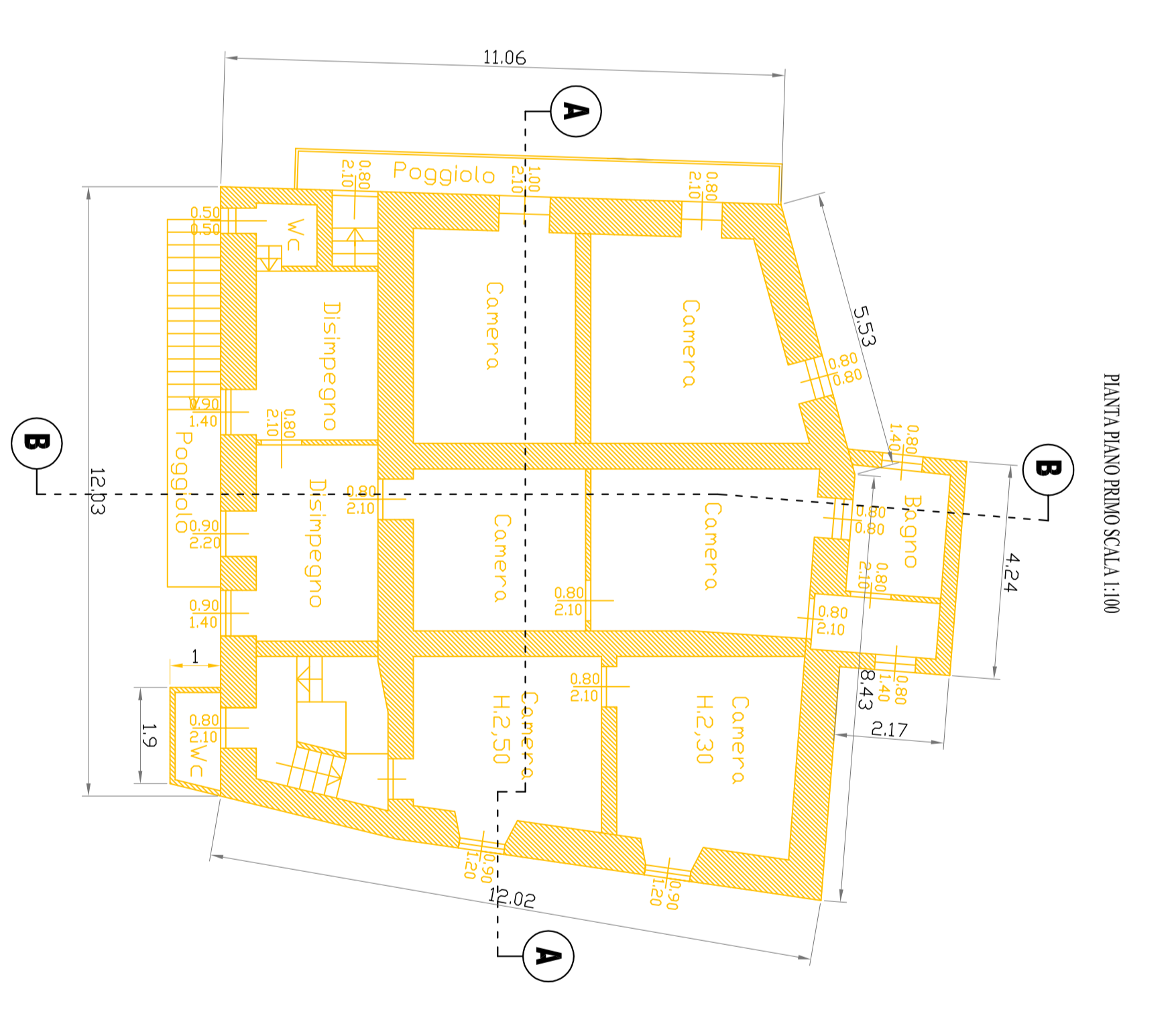
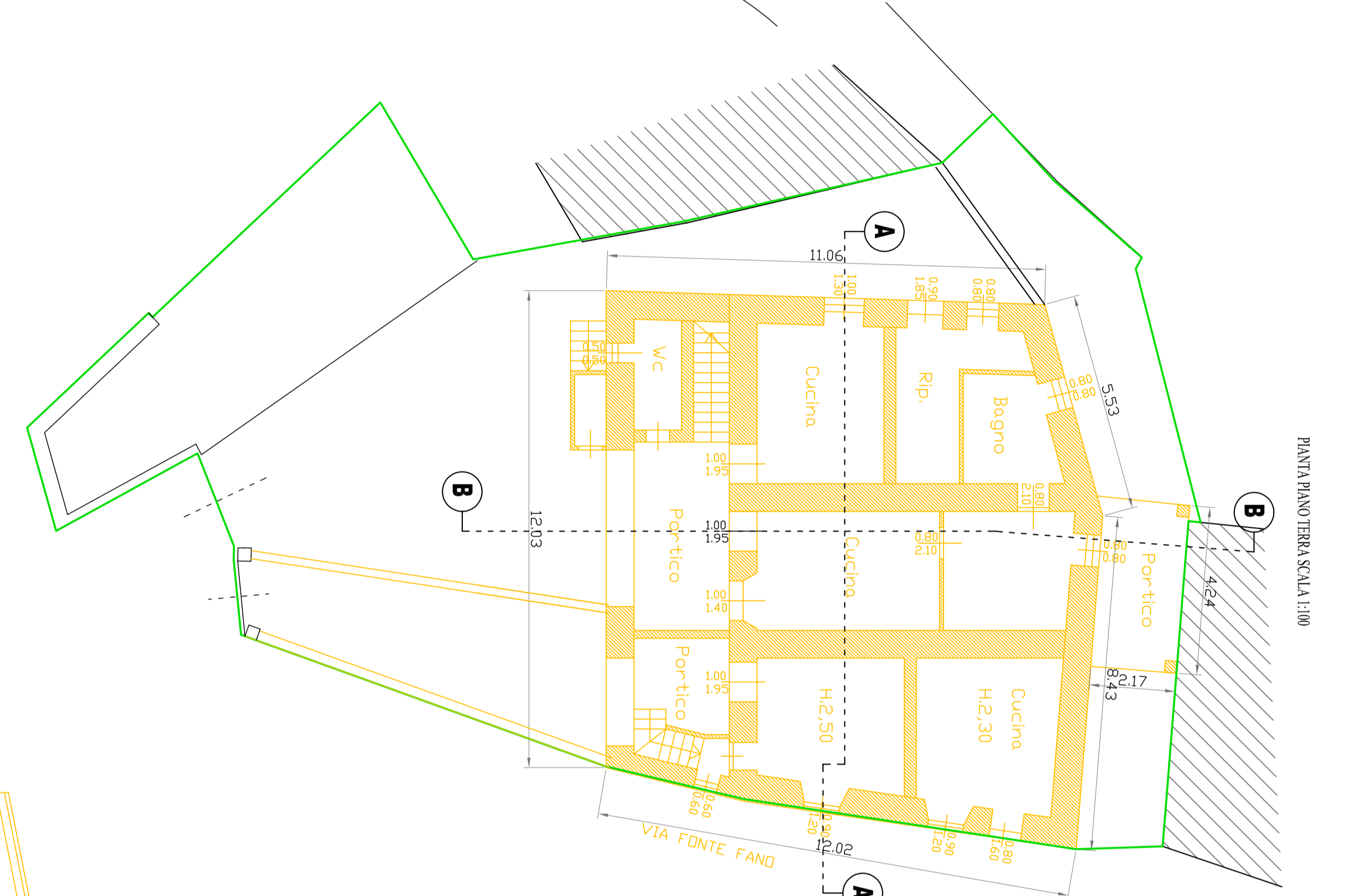
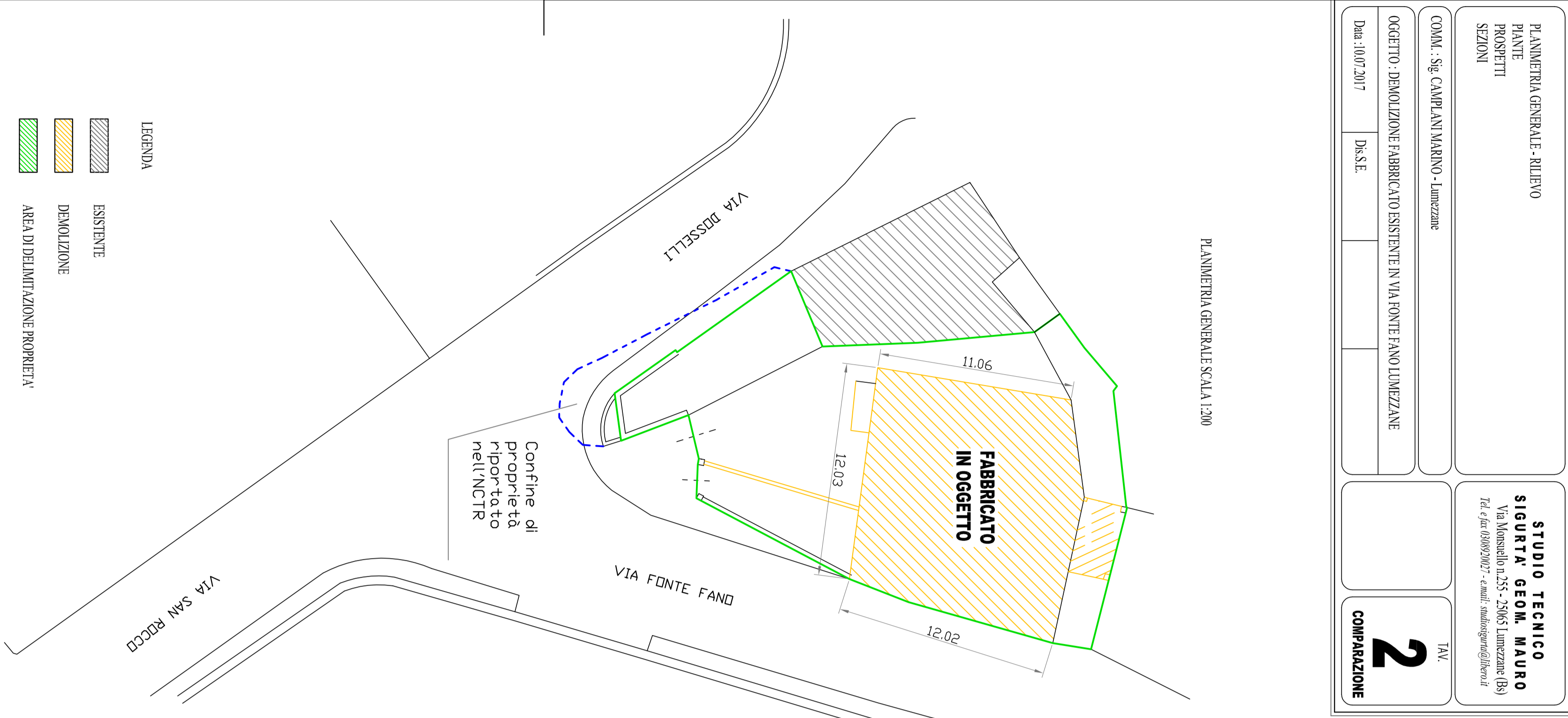


PLANIMETRIA GENERALE - RELATIVO PLANIMETRIA SEZIONI		<b>STUDIO TECNICO</b> <b>STUOKA GEOM. MAURO</b> <small>Tel. 0432/600827 - Fax 0432/600828</small>	
OGGETTO: DEMOLIZIONE FABBRICATO ESISTENTE IN VIA FONTE FANU LUNAZIONE		TNV <b>2</b> COMPARTIZIONE	
DATA: 10/07/2017	BASE		



- LEGENDA**  
 ESISTENTE  
 DEMOLIZIONE  
 AREA DI DEMOLIZIONE PROIBITA